

**Interpon**<sup>®</sup>  
powder coatings

EVERY COLOR IS GREEN



**Interpon D1000 - Color For Living**  
Residential Architectural Powder Coatings



**AkzoNobel**



# Interpon D1000

LASTING POWDER COATINGS FOR  
RESIDENTIAL PROJECTS

## THE FUTURE OF COLOR

People are driven by emotion – and color elicits different emotions in people. As the world's largest coating company, no other company has more experience in color trends than AkzoNobel. Home to the Aesthetics Centre, our in-house color and design experts anticipate and predict movements in trends that affect color and coating choices for architectural applications. We have drawn on the knowledge of our global Aesthetics Centre, along with our own Australian insights, to produce this Residential Architectural Powder Coatings Collection, **COLOR FOR LIVING**.

## TREND COLLECTION – DRIVEN BY DESIGN

The **Trend Collection** heralds the color themes of emerging architecture and allows harmony to be created within an environment designed for everyday living in Australia.

## SABLÉ™ COLLECTION – TACTILE IN DESIGN

The exclusive **Sablé™ Texture Collection** features a subtle deflection of light emerging from within a tactile surface. This allows for seamless fusion and intimacy with both natural building materials and rendered finishes.

## VIVICA™ – PEARLESCENT RANGE

The **Vivica™ Pearlescent Range** adorns acclaimed modern design with a soft metallic finish, providing luxury and richness with its timeless pearlescent lustre.

## COLLECTION ANODIC

**Collection Anodic** exhibits a sharp metallic finish to highlight a striking modern look. It's also an environmentally friendly alternative to anodising, with all the benefits of powder coating.

## COLOR FREEDOM

AkzoNobel values the importance of color and finish in your design and understands that color expression is an extension of your project. Why not take advantage of our made-to-order color service. For smaller projects down to 20kg, **Interpon MiniB™** and **Interpon MiniB™ Micro** provides fast service on small batch made-to-order colors that are specific to your needs. Some conditions do apply such as choice of color and product. Please contact the **Interpon** Customer Care Team for additional advice.

## GREEN STAR RATING

While **Interpon D1000** Powder Coatings are available in all colors, EVERY COLOR IS GREEN, which also safeguards our precious environment. Please contact the **Interpon** Customer Care Team for Green Star Rating advice.

## RESIDENTIAL WARRANTY

**Interpon D1000** is supported by a 10 Year Residential Warranty\* covering both color and film integrity. Designed exclusively for residential applications, projects must meet the following criteria for the warranty to apply:

- ▶ Application to aluminium only,
- ▶ Residential applications equivalent to Class 1 or Class 10 of the Building Code of Australia 2010,
- ▶ No greater than three (3) levels above ground,
- ▶ Located greater than 100 metres from any coast line.

\*Conditions apply to the Interpon D1000 Bronze Global Residential warranty. A copy of the warranty is available upon request.

## Interpon D APPROVED APPLICATORS

AkzoNobel has developed the **Interpon D** Approved Applicators Network to support the **Interpon D** Global Warranty Program. This program is designed to ensure the **Interpon** powder coating you choose is applied correctly, meeting **Interpon** Powder Coatings warranty requirements to local and international standards.

## HOW TO SPECIFY Interpon POWDER COATINGS

Once you have chosen **Interpon** Powder Coatings for your project, it's important to use the correct product. So we make specifying **Interpon** powder coatings easy. Simply:

- Nominate the **Interpon** product. e.g. **Interpon D1000**.
- Nominate the color, finish and product code. e.g. Anodic Natural Matt GY235A.

Please contact the **Interpon** Customer Care Team for additional specification support and advice.

## COMMERCIAL PRODUCT RANGE TO SUIT EVERY PROJECT

To compliment the **Interpon D1000** residential range, AkzoNobel offers **Interpon D2010**, **Interpon D2015 Ultriva™** and **Interpon D3000 Fluoromax®** commercial range of powder coatings for exclusive residential, commercial and prestigious commercial projects with extended warranties "on building" for up to 20 years. Please contact the **Interpon** Customer Care Team for warranty and specification support and advice.

## Interpon – YOUR PARTNER IN SUCCESS

**Interpon** Powder Coatings has a range of materials and resources to help you succeed with your project – from the selection of product, coordination of color, meeting of project specifications, choosing an approved applicator right through to ongoing care and maintenance advice. The Customer Care Team at **Interpon** Powder Coatings is ready and willing to assist you with your next project.

# Interpon D1000

COLOR FOR LIVING



## Interpon VIVICA™ PEARLESCENT RANGE



**Vivica™ Anthracite**  
Satin GY144A



**Vivica™ Storm Front**  
Matt GL249A



**Vivica™ Nobel Silver**  
Satin GY119A



**Vivica™ Ultra Silver**  
Gloss GY070A



**Vivica™ Citi®**  
Matt GL211A



**Vivica™ Snow Dust**  
Matt GA228A



**Vivica™ Black Onyx**  
Gloss GY042A



**Vivica™ Charcoal Metallic**  
Gloss GM019A



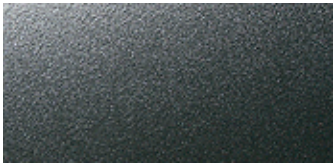
**Vivica™ Pewter Pearl**  
Satin GY199A



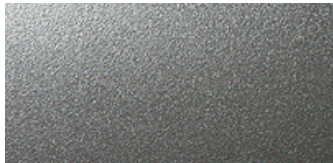
**Vivica™ Palladium Silver**  
Satin GY184C



## Interpon SABLÉ™ COLLECTION



**Sablé™ Bass**  
Texture GN297A



**Sablé™ Asteroid**  
Texture GN271A



**Sablé™ Brilliance**  
Texture GL277A



**Sablé™ Core Ten™**  
Texture GX350A

## Interpon COLLECTION ANODIC



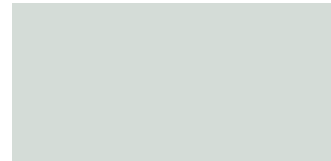
**Anodic Champagne**  
Matt GY276A



**Anodic Natural**  
Matt GY235A



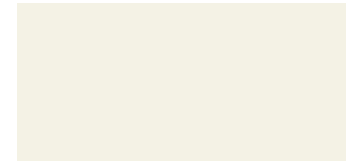
**Anodic Silver Grey**  
Matt GL237A



**Anodic Clear**  
Matt GY221A



**Anodic Natural Merlin**  
Matt GY243A



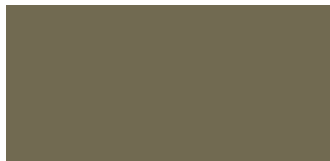
**Anodic Off White**  
Matt GD227A



**Anodic Dark Grey**  
Matt GL213A



**Anodic Slate Grey**  
Matt GY218A

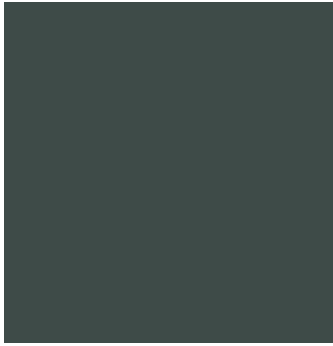


**Anodic Bronze**  
Satin GY114A

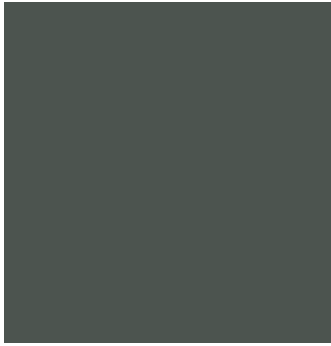


**Anodic Natural Silk**  
Matt GY242A

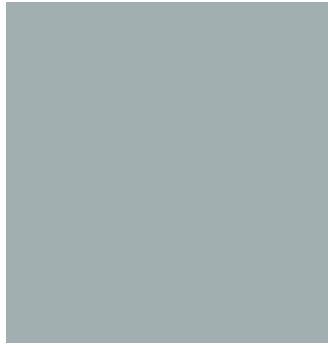
# Interpon TREND COLLECTION



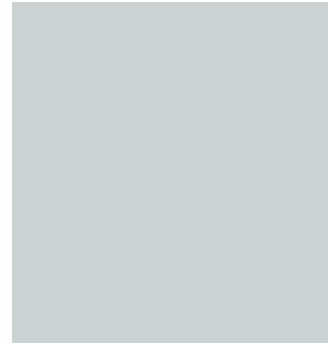
**Vivica™ Charcoal Pearl**  
Matt GY237A



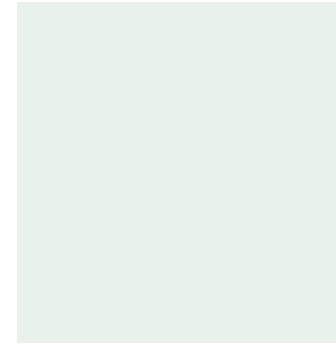
**Anodic Nighthawk**  
Matt GY244A



**Vivica™ Treasured Silver**  
Satin GW103K



**Vivica™ Mercury Silver**  
Gloss GW003K



**Vivica™ Beach Sand**  
Matt GY234A



**Vivica™ Mystic**  
Matt GY236A

# Interpon LIVING SERIES



**Transformer Grey**  
Gloss GL031A



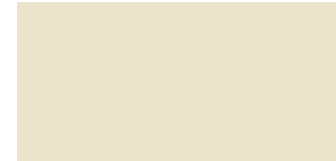
**Pearl White**  
Gloss GA078A



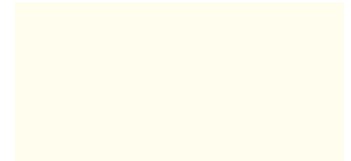
**Bright White**  
Gloss GA030A



**White**  
Satin GA124A



**Magnolia**  
Gloss GD025A



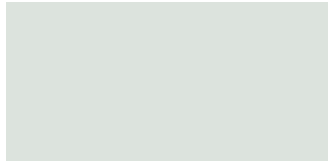
**White Birch**  
Gloss GA057A



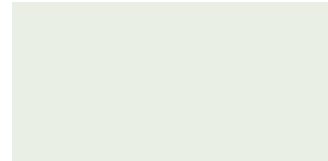
**Stromboli**  
Satin GK148A



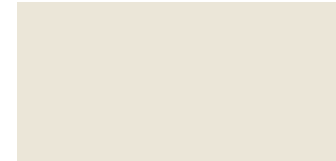
**APO Grey**  
Satin GL107A



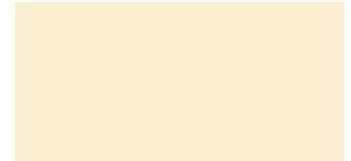
**Oyster Grey**  
Matt GL258A



**Off White**  
Matt GA211A



**Rivergum**  
Gloss GD042A



**Primrose**  
Gloss GD037A



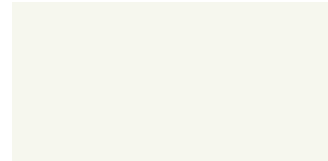
**Wizard**  
Gloss GJ054A



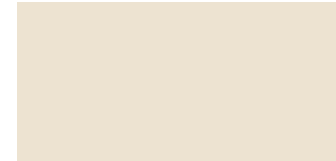
**Notre Dame**  
Gloss GL040A



**Olde Pewter**  
Satin GL175A



**Shoji White**  
Satin GA160A



**Barley**  
Gloss GD007A



**Doeskin**  
Satin GD188A



**Excel™ Hawthorn Green**  
Gloss GK030A



**Excel™ Charcoal**  
Satin GL180A



**Roseberry Grey**  
Gloss GL015A



**Pottery**  
Satin GM175A



**Almond Ivory**  
Gloss GD016A



**Stone Beige**  
Matt GD247A



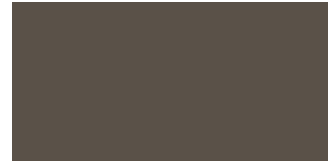
**Excel™ Heritage Green**  
Gloss GK044A



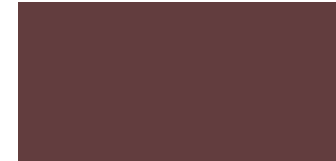
**Custom Black**  
Matt GN248A



**Black**  
Satin GN150A



**Hamersley Brown**  
Satin GM100A



**Claret**  
Satin GG142A

# Interpon EXCEL™ COLORBOND® STEEL COORDINATES



**Excel™ Pale Eucalypt®**  
Matt GK236A Satin GS136A



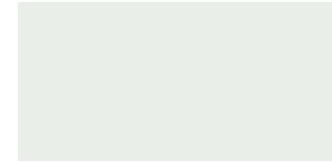
**Excel™ Blue Ridge®**  
Matt GJ221A Satin GQ121A



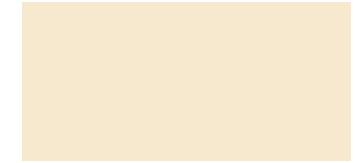
**Excel™ Windspray®**  
Matt GL266A Satin GP166A



**Excel™ Shale Grey®**  
Matt GL284A Satin GP184A



**Excel™ Surfmist®**  
Matt GA236A Satin GB136A



**Excel™ Classic Cream®**  
Matt GD245A Satin GU145A



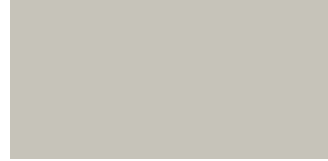
**Excel™ Wilderness®**  
Matt GK289A Satin GS189A



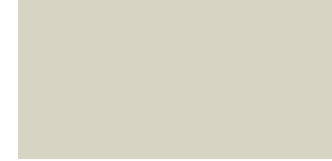
**Excel™ Ironstone®**  
Matt GL236A Satin GP136A



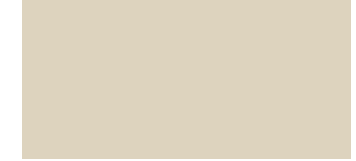
**Excel™ Woodland Grey®**  
Matt GL205A Satin GP105A



**Excel™ Dune®**  
Matt GL252A Satin GP152A



**Excel™ Evening Haze®**  
Matt GM235A Satin GT135A



**Excel™ Paperbark®**  
Matt GD214A Satin GU114A



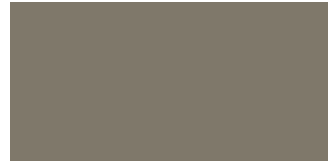
**Excel™ Cottage Green®**  
Matt GK274A Satin GS174A



**Excel™ Deep Ocean®**  
Matt GJ203A Satin GQ103A



**Excel™ Monument®**  
Matt GL229A Satin GP129A



**Excel™ Jasper®**  
Matt GM214A Satin GT114A



**Excel™ Bushland®**  
Matt GK203A Satin GS103A



**Excel™ Headland®**  
Matt GG219A Satin GV119A

Colors displayed on this color card are a guide only and have been matched as closely as possible to Interpon production standards under daylight conditions. Due to the nature of the printing process, some degree of color and gloss level variation may occur. Where more than one finish is available, product color may vary. We recommend that you use production line prepared samples for final color selection or approval.



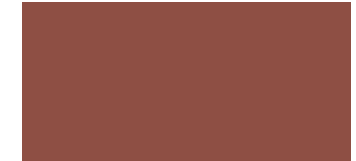
**Excel™ Night Sky®**  
Matt GN231A Satin GN121A



**Excel™ Loft®**  
Matt GM236A Satin GT136A



**Excel™ Sandbank®**  
Matt GM216A Satin GT116A



**Excel™ Manor Red®**  
Matt GG262A Satin GV162A

**Interpon D1000**  
Residential

YEARS

**Bronze**  
GLOBAL  
WARRANTY



**Interpon**  
powder coatings

EVERY COLOR IS GREEN

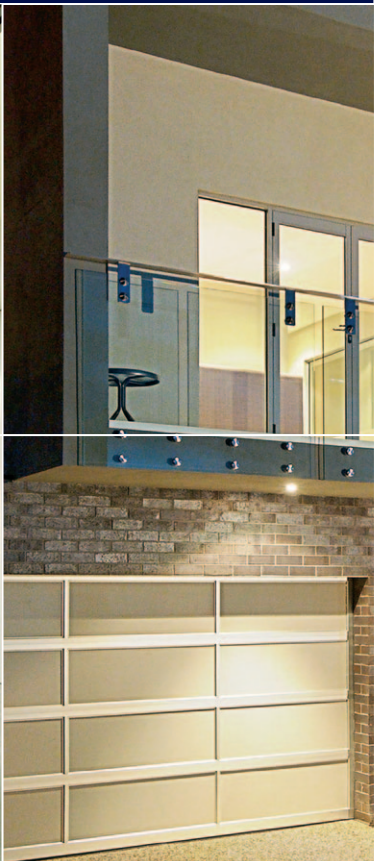
## Interpon CUSTOMER CARE TEAM

East Coast and South Australia Tel: 1800 630 516 Fax: 1800 650 786

Western Australia Tel: 08 9494 7727 Fax: 08 9494 7771

Email: [salesoz@interpon.com](mailto:salesoz@interpon.com)

[www.interpon.com.au](http://www.interpon.com.au)



## Sales and Support Contacts

### AUSTRALIA

e: [salesoz@interpon.com.au](mailto:salesoz@interpon.com.au)

[www.interpon.com.au](http://www.interpon.com.au)

### EAST COAST AND SOUTH AUSTRALIA

Tel: 1800 630 516

Fax: 1800 650 786

### WESTERN AUSTRALIA

Tel: 08 9494 7727

Fax: 08 9494 7771



### Disclaimer

Unless otherwise agreed by us in writing, any contract to purchase products referred to in this color card and any advice that we give in connection with the supply of products are subject to our standard conditions of sale. Typical end uses for Interpon products are displayed in this publication using actual projects and representative images.

Interpon® and Fluoromax® are registered trademarks of AkzoNobel International BV. Ultriva™, Excel™, Vivica™ and MiniB™ are trademarks of AkzoNobel Pty Limited.

COLORBOND®\* and ® color names are registered trademarks of BlueScope Steel Limited. ™\* color names are trademarks of BlueScope Steel Limited. # Over time performance may vary between COLORBOND® steel and Interpon Powder Coatings due to the different paint technologies used.

AkzoNobel would like to acknowledge and thank Trend Windows, NALCO, AWS and Urbye Homes for images used in this color card.

© Copyright 2009 AkzoNobel Pty Limited ABN 59 000 119 424 March 2009. Design: jwam.com.au



Proudly Supplied by:

# Interpon® powder coatings

EVERY COLOR IS GREEN

[www.interpon.com.au](http://www.interpon.com.au)